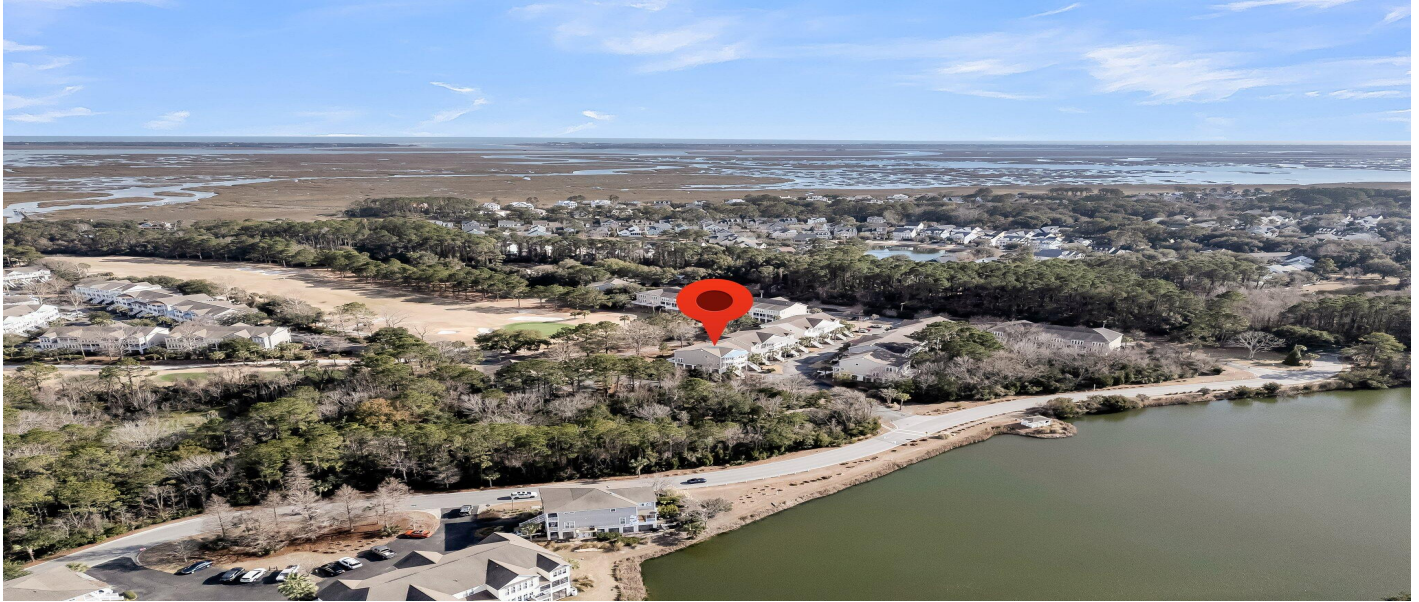




3038 Fraserburgh Way, Mount Pleasant, 29466, SC

https://jamesschiller.com/properties/3038-fraserburgh-way/mount-pleasant/sc/29466/MLS_ID_25002983



Price - \$634,900

Bedrooms	Baths	SqFt	Lot Size	Year Built	DOM
3	3	2120	0.1000	2012	63 Days

Features

Cooling

- Central Air

Heating

- Heat Pump

Laundry Features

- Washer Hookup

Community Features

- Clubhouse
- Fitness Center

Interior Features

- Golf Course
- Golf Membership Available
- Park
- Pool
- Tennis Court(s)
- Walk/Jog Trails
- Ceiling - Smooth
- Tray Ceiling(s)
- High Ceilings
- Garden Tub/Shower
- Walk-In Closet(s)
- Ceiling Fan(s)
- Entrance Foyer
- Great
- Pantry

Lot Features

- High
- Level
- On Golf Course

Other

- Asphalt
- Ceiling Fan(s)
- Garden Tub/Shower
- Walk-In Closet(s)

Description

Welcome to this stunning 3-bedroom, 3-bathroom townhome located in the highly sought-after Charleston National community, within the desirable subsection of The Retreat. This elevated townhome boasts an open floor plan, with a spacious living area that offers breathtaking views of the golf course - perfect for relaxing or entertaining. The kitchen is well-appointed with plenty of cabinetry, making it an ideal space for cooking and gathering. Adjacent to the living area, you'll find a versatile office with double sliding doors, providing a quiet space for work or study. Upstairs, the large main bedroom features a tray ceiling and a generous ensuite bathroom with a double vanity, a large garden tub for soaking, and a separate shower - the perfect retreat after a long day. The two a-car garage underneath for convenience and ample storage. As a resident of The Retreat, you'll enjoy access to incredible community amenities, including swim and tennis club privileges. Golf enthusiasts will appreciate the preferred membership packages, along with the clubhouse, driving range, pro shop, and putting green. For those seeking an active lifestyle, there's also the option to join the onsite fitness center. Located just 20 minutes from historic downtown Charleston, 10 minutes from the pristine beaches of Isle of Palms, and close to upscale shopping and dining in Mount Pleasant, this townhome offers the perfect blend of peaceful living and easy access to all the best the area has to offer. This townhome has new flooring on the first floor, new carpet on the second floor and new paint throughout. Don't miss out on this incredible opportunity in Mount Pleasant - schedule your showing today!

SEE THIS PROPERTY



James Schiller

Realtor, Brand Name Real Estate

Phone: 18434788061

Email: jameseschiller@gmail.com

Check On Site



https://jameseschiller.com/properties/3038-fraserburgh-way/mount-pleasant/sc/29466/MLS_ID_25002983

Location



3038 Fraserburgh Way, Mount Pleasant, 29466, SC